

KAMARAJ
COLLEGE OF ENGINEERING & TECHNOLOGY



(An Autonomous Institution - AFFILIATED TO ANNA UNIVERSITY, CHENNAI)

S.P.G.Chidambara Nadar - C.Nagammal Campus

S.P.G.C. Nagar, K.Vellakulam - 625 701 (Near VIRUDHUNAGAR).

DEPARTMENT OF ARTIFICIAL INTELLIGENCE AND DATA SCIENCE



NEWS LETTER

MAY 2025 & JUNE 2025

Volume 3, Issue 5



CONTENTS

- 01** VISION & MISSION OF THE INSTITUTION
- 02** VISION & MISSION OF THE DEPARTMENT
- 03** PROGRAM EDUCATIONAL OBJECTIVES (PEOs)
- 04** KNOWLEDGE AND ATTITUDE PROFILE(WK)
- 05** PROGRAM SPECIFIC OUTCOMES (PSOs)
- 06** ABOUT THE DEPARTMENT
- 07** KNOWLEDGE ENRICHMENT
- 07** EVENTS ORGANIZED
- 08** FACULTY ACHIEVEMENTS
- 09** STUDENT ACHIEVEMENTS
- 10** PLACEMENT CORNER

VISION OF THE INSTITUTION

To make this institution the unique in its field of research and development activities in this part of the world.



MISSION OF THE INSTITUTION

To impart highly innovative and technical knowledge to the urban and underserved rural students through "Total Quality Education".

QUALITY POLICY

Committed to impart Quality Technical Education imbued with proficiency, human values and continual improvement.



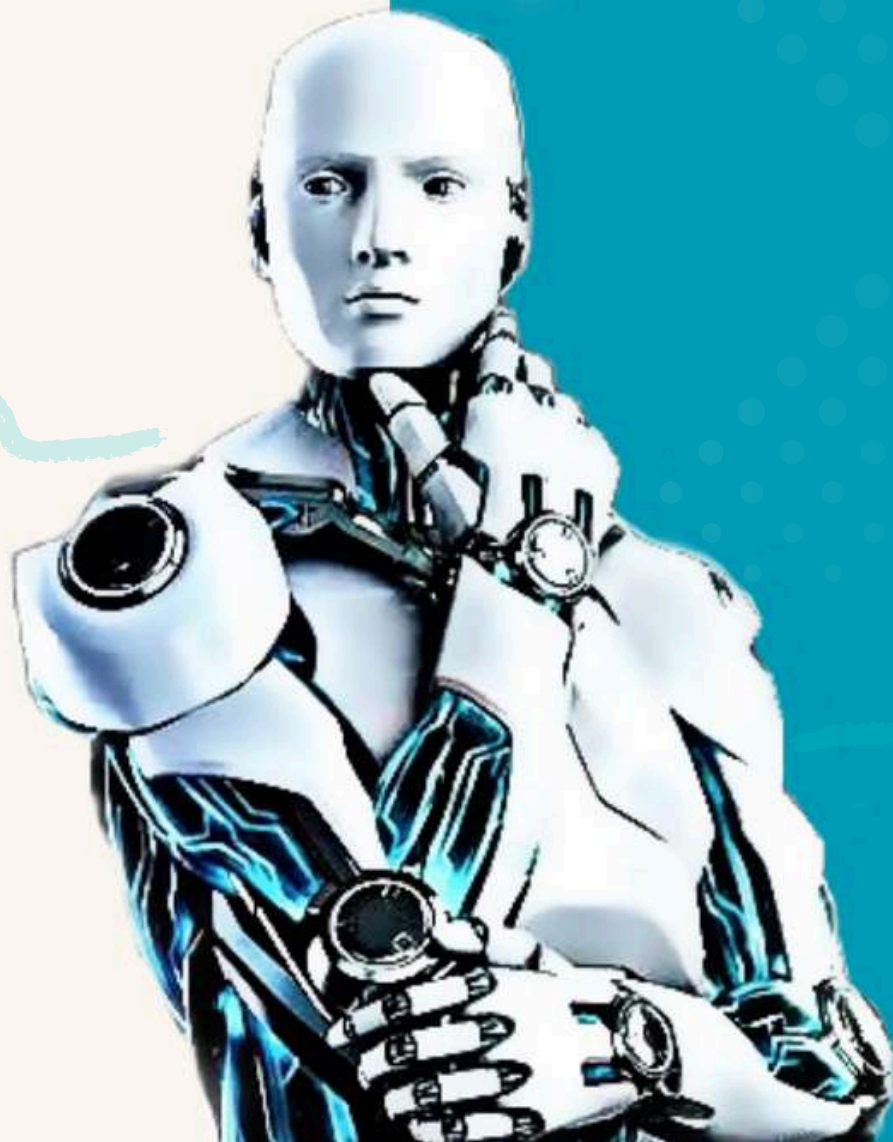
VISION & MISSION OF THE DEPARTMENT

VISION

To make the Department of Artificial Intelligence and Data Science the unique in its field of research and development activities in this part of the world.

Mission

To impart highly innovative and technical knowledge to the urban and underserved rural students in Artificial Intelligence and Data Science through "Total Quality Education".



PROGRAM EDUCATIONAL OBJECTIVES (PEOs)

- PEO -1** Apply the basic engineering skills and domain knowledge for developing effective computing solutions to address various social issues.
- PEO -2** To have a successful career in technical / managerial roles in multi-disciplinary environment.
- PEO -3** To address evolving technical challenges and problems in the areas of computing.

PROGRAM SPECIFIC OUTCOME (PSOs)

- PSO -1 Professional Skills:** To apply learned skills to build optimized solutions pertaining to Data Processing, Artificial Intelligence and Machine Learning
- PSO -2 Problem-Solving Skills:** To analyze data using domain knowledge to get insights and develop appropriate solutions

KNOWLEDGE AND ATTITUDE PROFILE (WK)

WK -1 A systematic, theory-based understanding of the natural sciences applicable to the discipline and awareness of relevant social sciences.

WK -2 Conceptually-based mathematics, numerical analysis, data analysis, statistics and formal aspects of computer and information science to support detailed analysis and modelling applicable to the discipline.

WK -3 A systematic, theory-based formulation of engineering fundamentals required in the engineering discipline.

WK -4 Engineering specialist knowledge that provides theoretical frameworks and bodies of knowledge for the accepted practice areas in the engineering discipline; much is at the forefront of the discipline.

WK -5 Knowledge, including efficient resource use, environmental impacts, whole-life cost, re-use of resources, net zero carbon, and similar concepts, that supports engineering design and operations in a practice area.

WK -6 Knowledge of engineering practice (technology) in the practice areas in the engineering discipline.

WK -7 Knowledge of the role of engineering in society and identified issues in engineering practice in the discipline, such as the professional responsibility of an engineer to public safety and sustainable development.

WK -8 Engagement with selected knowledge in the current research literature of the discipline, awareness of the power of critical thinking and creative approaches to evaluate emerging issues.

WK -9 Ethics, inclusive behaviour and conduct. Knowledge of professional ethics, responsibilities, and norms of engineering practice. Awareness of the need for diversity by reason of ethnicity, gender, age, physical ability etc. with mutual understanding and respect, and of inclusive attitudes.

PROGRAM OUTCOMES(POS)

Engineering Graduates will be able to

PO -1 Engineering Knowledge: Apply knowledge of mathematics, natural science, computing, engineering fundamentals and an engineering specialization as specified in WK1 to WK4 respectively to develop to the solution of complex engineering problems.

PO -2 Problem Analysis: Identify, formulate, review research literature and analyze complex engineering problems reaching substantiated conclusions with consideration for sustainable development (WK1 to WK4).

PO -3 Design/Development of Solutions: Design creative solutions for complex engineering problems and design/develop systems/components/processes to meet identified needs with consideration for the public health and safety, whole-life cost, net zero carbon, culture, society and environment as required (WK5).

PO -4 Conduct Investigations of Complex Problems: Conduct investigations of complex engineering problems using research-based knowledge including design of experiments, modelling, analysis & interpretation of data to provide valid conclusions. (WK8).

PO -5 **Engineering Tool Usage:** Create, select and apply appropriate techniques, resources and modern engineering & IT tools, including prediction and modelling recognizing their limitations to solve complex engineering problems (WK2 and WK6).

PO -6 **The Engineer and The World:** Analyze and evaluate societal and environmental aspects while solving complex engineering problems for its impact on sustainability with reference to economy, health, safety, legal framework, culture and environment. (WK1, WK5, and WK7).

PO -7 **Ethics:** Apply ethical principles and commit to professional ethics, human values, diversity and inclusion; adhere to national & international laws (WK9).

PO -8 **Individual and Collaborative Teamwork:** Function effectively as an individual, and as a member or leader in diverse/multi-disciplinary teams.

PO -9

Communication: Communicate effectively and inclusively within the engineering community and society at large, such as being able to comprehend and write effective reports and design documentation, make effective presentations considering cultural, language, and learning differences.

PO -10


Project Management and Finance: Apply knowledge and understanding of engineering management principles and economic decision-making and apply these to one's own work, as a member and leader in a team, and to manage projects and in multidisciplinary environments.

PO -11

Life-Long Learning: Recognize the need for, and have the preparation and ability for i) independent and life-long learning ii) adaptability to new and emerging technologies and iii) critical thinking in the broadest context of technological change (WK8).



ABOUT THE DEPARTMENT



The Department of **Artificial Intelligence and Data Science** (ADS) was established in the year 2020 with an intake of 60 students at Kamaraj College of Engineering and Technology with the goal of providing advanced education and research opportunities in the rapidly evolving fields of artificial intelligence (AI) and data science. The department provides a four-year B.Tech. programme in Artificial Intelligence and Data Science. Now with a revised intake of 120 students per year, our department remains a forerunner in imparting innovative and technical knowledge. This department is committed to delivering a comprehensive curriculum that includes both theoretical foundations and practical applications of AI and data science. It aims to foster an environment of innovation and excellence, supported by state-of-the-art infrastructure and experienced faculty.

DEPARTMENT MONTHLY REPORT

MONTH : MAY 2025 - JUNE 2025

FACULTY ACHIEVEMENTS RESEARCH DATA

CERTIFICATION BY FACULTY

S.No	Name of the faculty	Certificate Details	Date
1	Mrs.S.Nithya,AP/ADS	Acted as Reviewer in Journal of Computational Mathematics and Data Science	22.05.2025
2	Mrs.S.Nithya,AP/ADS	Infosys Spring Board -Machine Learning Foundation Certification (Proctor Mode)	12.05.2025
3	Mrs.K.Rajalakshmi,AP/ADS	NPTEL Certificate on "Outcome based pedagogic principles for effective teaching " & " Deep Learning for Visual Computing "	10.05.2025 & 20.05.2025
4	Mrs.K.Rajalakshmi, AP/ADS	NPTEL FDP Certificate on " Deep Learning for Visual Computing"	20.05.2025
5	Mrs.K.Indumathi,AP/ADS	NPTEL - 12 Weeks Course on " Introduction to Machine Learning"	20.05.2025
6	Mrs.V.Sangeetha, AP/ADS	NPTEL-12 Weeks Course on "AI in Marketing"	20.05.2025

Placement Corner

S.NO	Student Name	Company Placed
1	SIVAKAMI.G	HEXAWARE TECHNOLOGIES LIMITED
2	AKSHAY PIRANAV.B	QUARKSEK TECHNOLOGIES PRIVATE LIMITED
3	SUTHAN.V	SOLARTIS TECHNOLOGY SERVICES PVT.LTD
4	MATHIJAJIN.A	SANMINA SCI INDIA LTD
5	KAVIYA.P	KAAVIAN SYSTEMS PVT. LTD
6	PRAVEEN KUMAR.M	SANMINA SCI INDIA LTD
7	HARSHINI.B	QUARKSEK TECHNOLOGIES PRIVATE LIMITED
8	SURYA BALAN.R	TRIVINE TECHNOLOGY SOLUTIONS
9	AKASH.R	TRIVINE TECHNOLOGY SOLUTIONS
10	NIVEDITHA.N	TERV PRO
11	NANTHA KUMAR.M	MITSUBA INDIA PRIVATE LIMITED
12	JAYASUDHA.S	JS TECHVISION SOLUTIONS
13	MAKIMASATTHI.N	AARVIK DIGITAL IT SOLUTIONS
14	ADLIN WISELEY.I	SKILLMINE TECHNOLOGY CONSULTING PVT., LTD
15	ROSHAN KUMAR.N.K	EDUCATORS LABS PVT LIMITED
16	SIVARANJANI.R	SKILLMINE TECHNOLOGY CONSULTING PVT., LTD
17	TARUN.B	RELEVANTZ TECHNOLOGY SERVICES INDIA PVT.LTD

S.NO	Student Name	Company Placed
18	HARI HARA SUDHAN.P	NOVACIS DIGITAL PVT. LTD
19	HEMA.T	H – ONE ENTERPRISES
20	LAXMIPATHY VENKATESH.V	HCL TECHNOLOGIES
21	DINESH KUMAR.S	SKILLMINE TECHNOLOGY CONSULTING PVT., LTD
22	KISHORE KUMAR.L	TRIVINE TECHNOLOGY SOLUTIONS
23	SIVANI.R	FACEPREP
24	ANDALPRIYA.C	TERV PRO
25	NUTTRENAI.V	RELEVANTZ TECHNOLOGY SERVICES INDIA PVT.LTD
26	SOWNDARYA.A.K	KAAR TECHNOLOGIES PVT LTD
27	MOHAMED FAIZAL ALI.S	AAPGS PRIVATE LIMITED
28	SRI SHIVANUJA.S	TRIVINE TECHNOLOGY SOLUTIONS
29	RAJA LAKSHMI.K	FACEPREP
30	NHIRANJAN.M.K	CLUSTREX DATA PRIVATE LTD
31	JEYADHEESH.N	CLUSTREX DATA PRIVATE LTD
32	GENGADEVI.P	SELVA ENGINEERING AND AUTOMATION
33	SANTHOSH.H.M	HEXAWARE TECHNOLOGIES LIMITED
34	YUVA SRL.R	QUARKSEK TECHNOLOGIES PRIVATE LIMITED
35	RAAMPRAVAV.R	6F TECHNICAL CONSULTANT INDIA PVT LTD
36	VIJAYAMADAESHWAR. M	INFINOG VENTURES

S.NO	Student Name	Company Placed
37	MOHAMED FARHAN.S	MITSUBA INDIA PRIVATE LIMITED
38	ROHITH.A	AARVIK DIGITAL IT SOLUTIONS
39	SANTHOSH KUMAR.S	COGNIZANT TECHNOLOGY SOLUTIONS
40	KATHIROHN.A.M	TRIVINE TECHNOLOGY SOLUTIONS
41	SIVA SAARATHI.S	TERV PRO
42	HARINI.R	QUARKSEK TECHNOLOGIES PRIVATE LIMITED
43	MOHAMED FASIDH.M	MITSUBA INDIA PRIVATE LIMITED
44	SIVA PRAKASH.S	QUARKSEK TECHNOLOGIES PRIVATE LIMITED
45	AHAMED SAHIL.A	QUINTESSENCE BUSINESS SOLUTIONS & SERVICES
46	SHWEATHA AARTHY.S.N	INFINOG VENTURES
47	SYAMALA DEVI.S	FACEPREP
48	MANIKKAVASAKAR.T	SANMINA SCI INDIA LTD
49	MARIUMBEL.S	AARVIK DIGITAL IT SOLUTIONS
50	SRINITHI.S	ICANIO TECHNOLOGIES
51	GANESA MOORTHY.M	SANMINA SCI INDIA LTD
52	KARUPPASAMY.V	SANMINA SCI INDIA LTD
53	PONMANI BOOPATHY.P	TERV PRO
54	ABIMANYU.N	SANMINA SCI INDIA LTD

Editorial Team



Chief Editor

Dr.R.AGHILA, HoD/ADS

Newsletter In-charge

MS.S.Nithya, AP/ADS

MS.R.Indhuja, AP/ADS

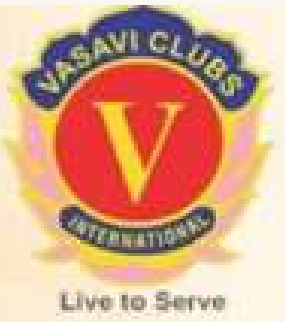
Student Member

Mr.R.AKASH - IV ADS

Mr.A.Syed Nazumudeen -IV ADS

Mr.V.Hariharan-III ADS

Mr.V.R.S.Selva Kumar-III ADS



VASAVI CLUB MADURAI

Club Code-1359/2009

Dist.V501A,Region VII,Zone I



VASAVI CLUB YEARLY SUBSCRIPTION - 2026

Board of Directors - Rs. 6500

Members - Rs. 5000

Dear All Vasavians,

“Together We Serve, Together We Celebrate.”

We are pleased to serve as the PST this year and look forward to your support in making this year truly memorable.

With unity and commitment, we invite you to join us for monthly events and family get-togethers.

Please complete the membership payment to enjoy all benefits.

.

PRESIDENT

Vn 3KCGF S.Manohar

SECRETARY

Vn.V.KarthikRaja

TREASURER

Vn 1KCGF K.Thiagarajan

PAYMENT MODE

Bank - Karur Vysya Bank

Branch - Madurai Main

Account Name - Vasavi Club Madurai

Account No -1159172000000789

IFSC Code - KVBL0001159